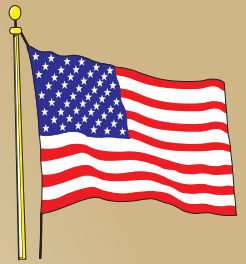


Building  
**AMERICA'S**  
Future... Today!



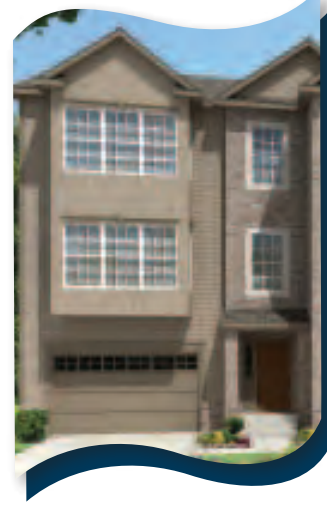
# Multi-Family



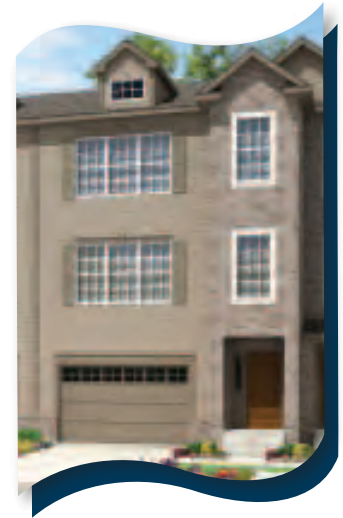
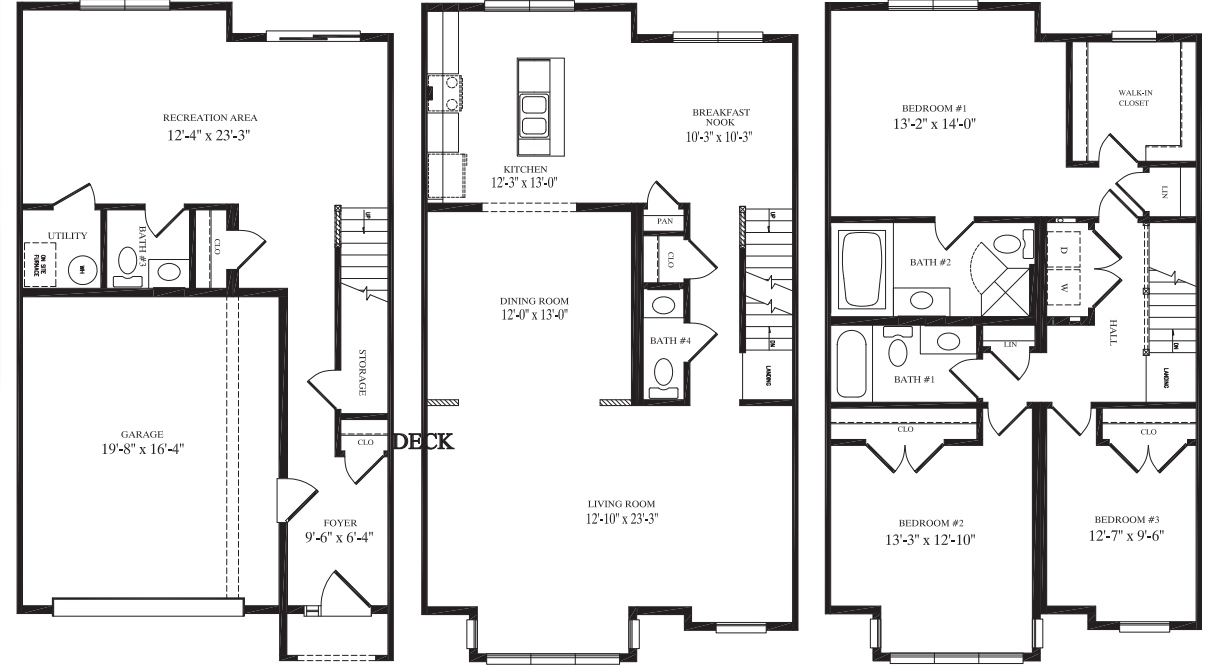
Made in USA

Three-Story

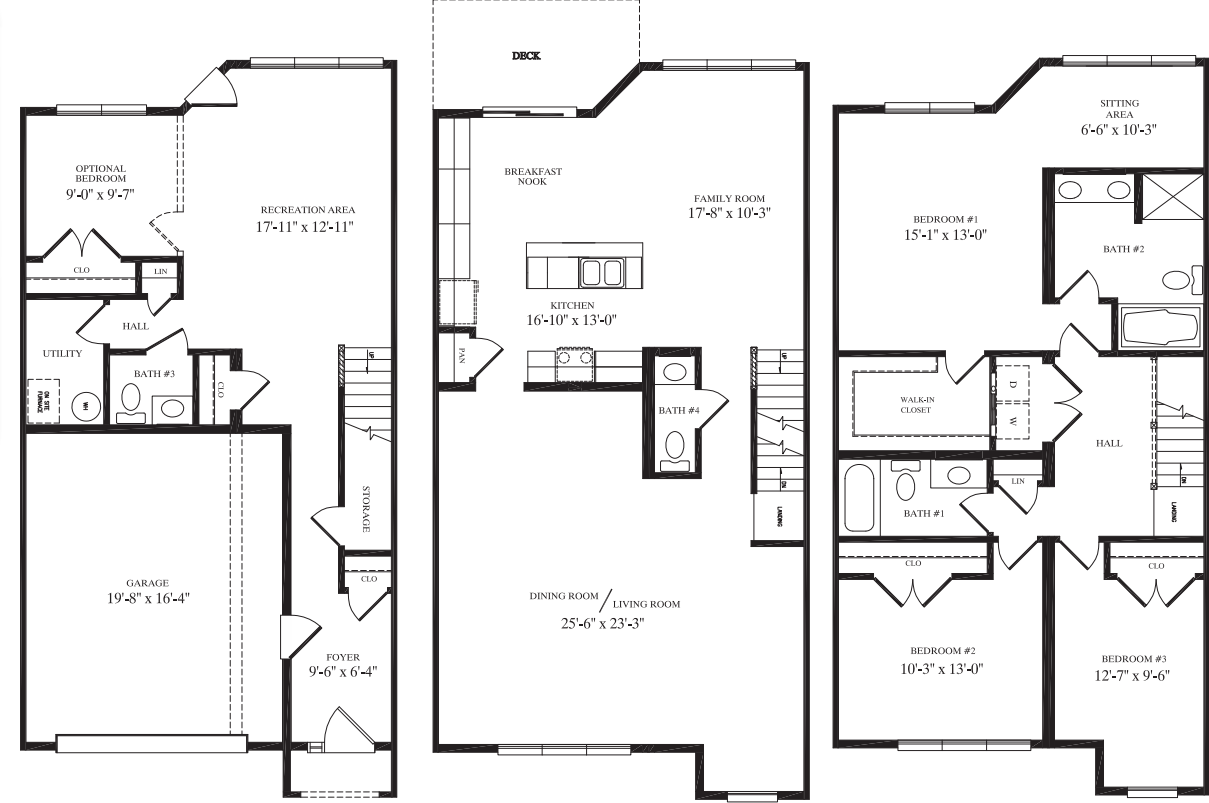
# TOWNHOUSE



**Brunswick**  
24' x 40'  
Three-Story Townhouse  
2,847 sq. ft.



**Brookville**  
24' x 47'  
Three-Story Townhouse  
3,129 sq. ft.



Three-Story

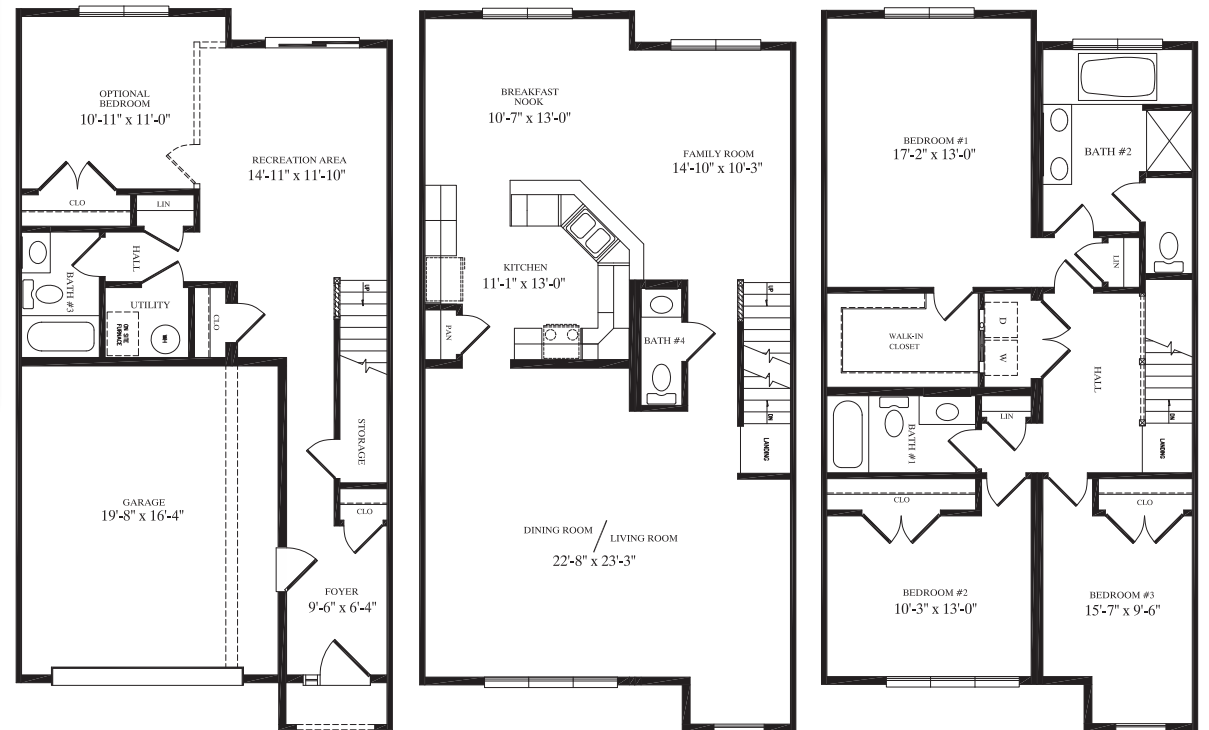
# TOWNHOUSE

Three-Story

# TOWNHOUSE



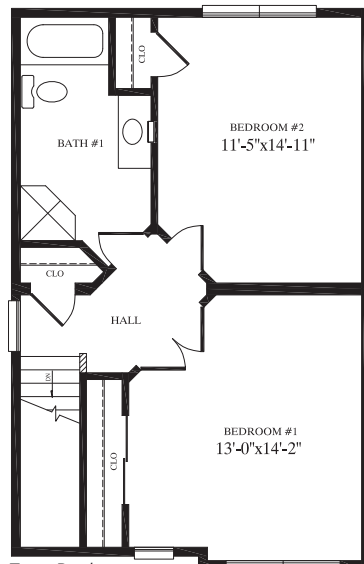
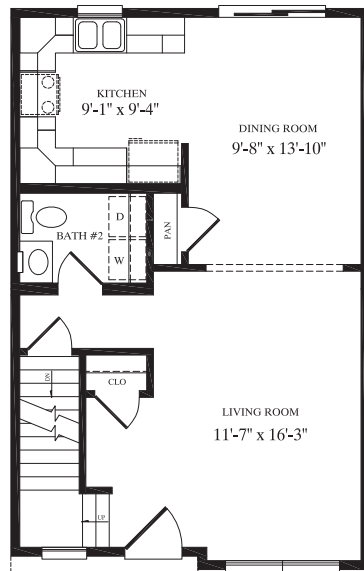
**Burtonsville**  
24' x 43'  
Three-Story Townhouse  
3,099 sq. ft.



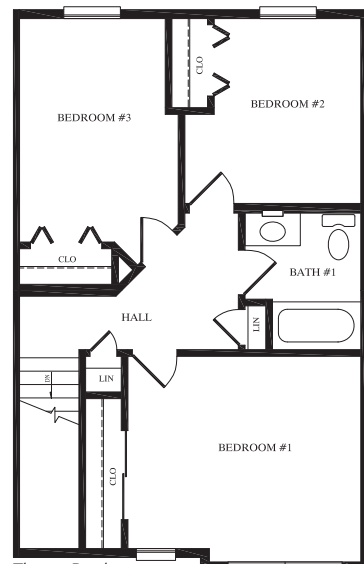


*Single-Story* **DUPLEX**

**Eagles Mere**  
 58' x 59'  
 Single-Story Duplex  
 1,669 sq. ft. unit 1  
 1,232 sq. ft. unit 2  
 2,901 sq. ft. total



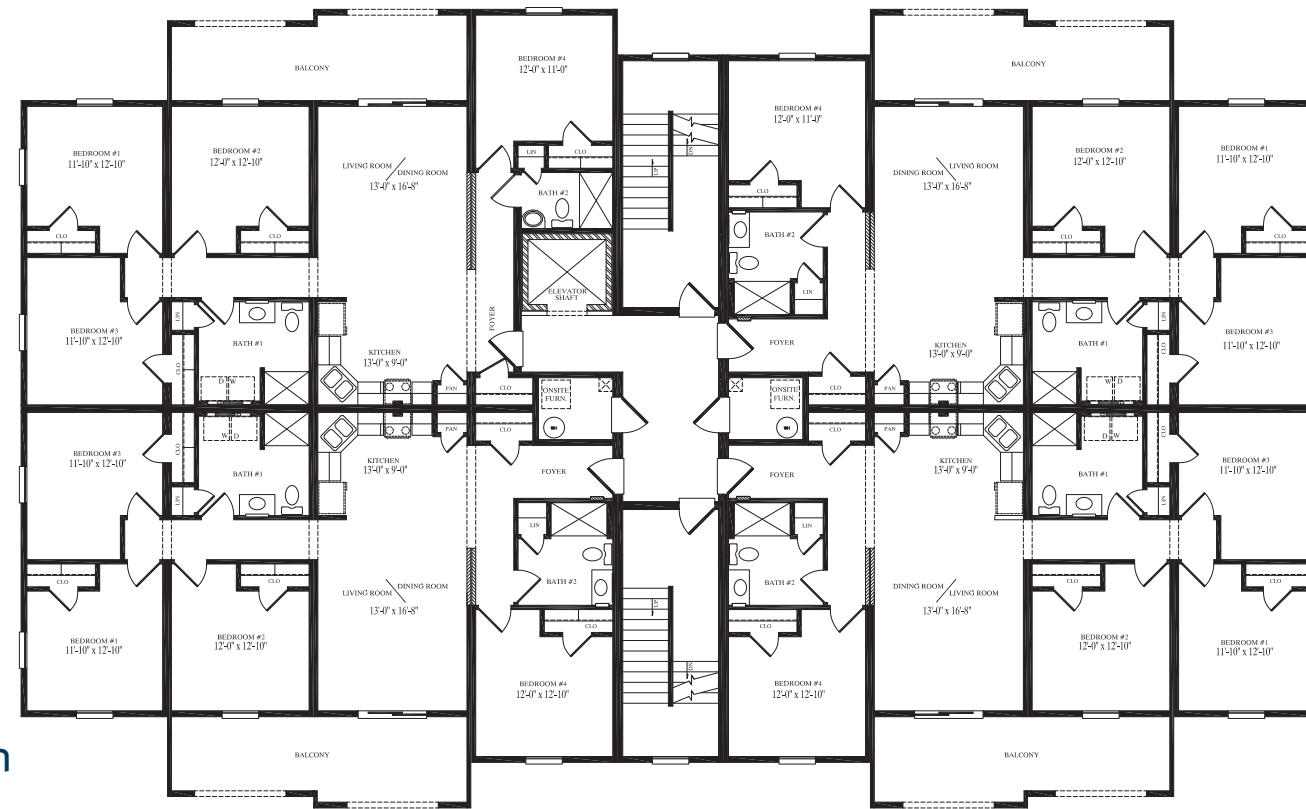
Two-Bedroom Model  
4



Three-Bedroom Model

*Two-Story* **TOWNHOUSE**

**Carlisle**  
 32' x 20'  
 Two-Story Townhouse  
 1,244 sq. ft.



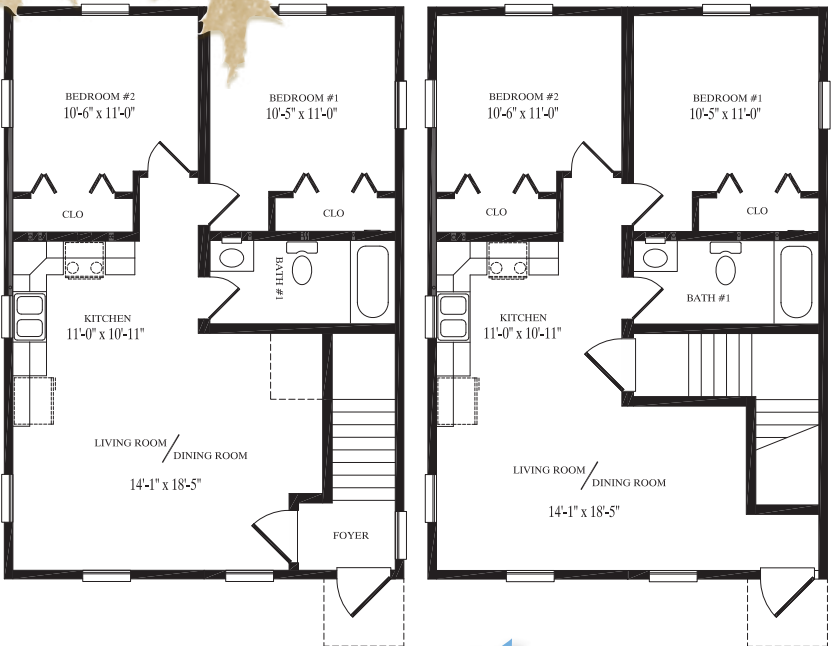
**Hillsborough**  
 70' x 114'  
 Four-Story Condominium  
 1,424 sq. ft. per living unit  
 6,485 sq. ft. per floor  
 25,940 sq. ft. total

*Four-Story* **CONDOMINIUM**

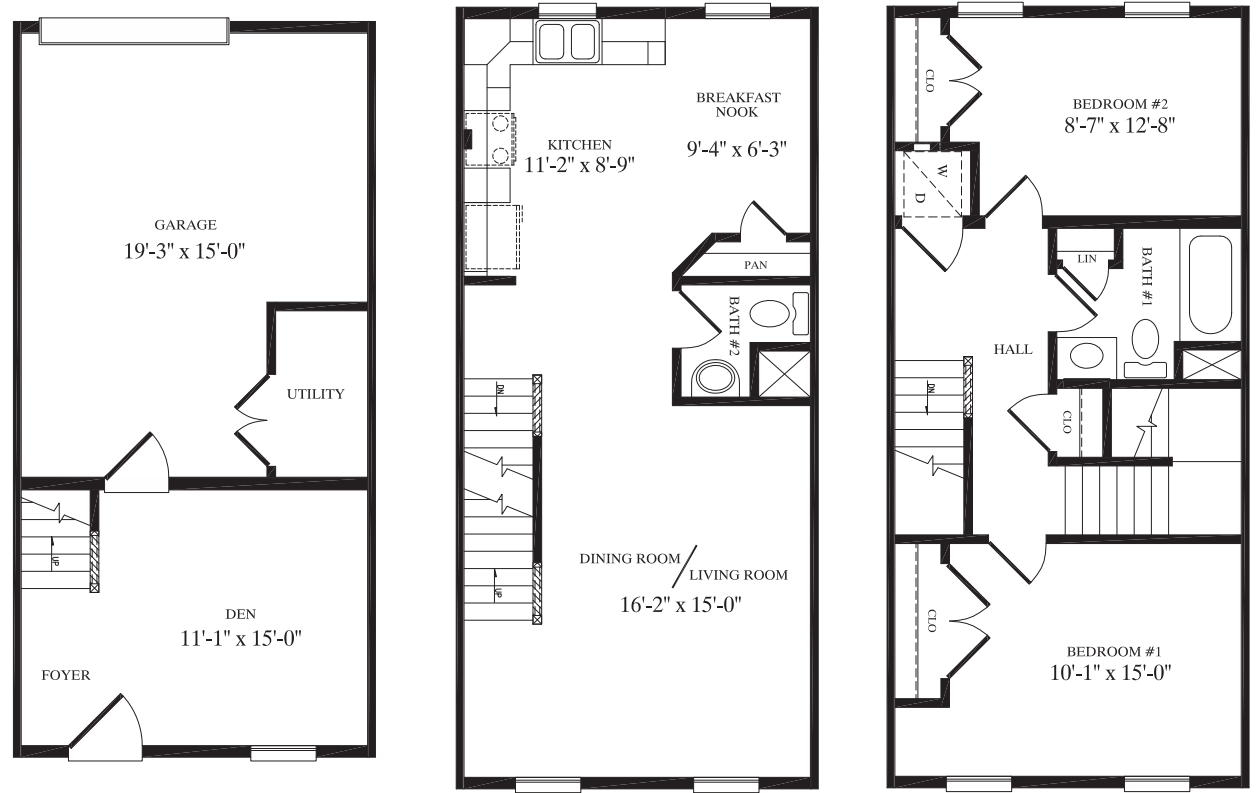




# Two-Story DUPLEX



**Aberdeen**  
16' x 34'  
Three-Story  
Townhouse  
1,576 sq. ft.

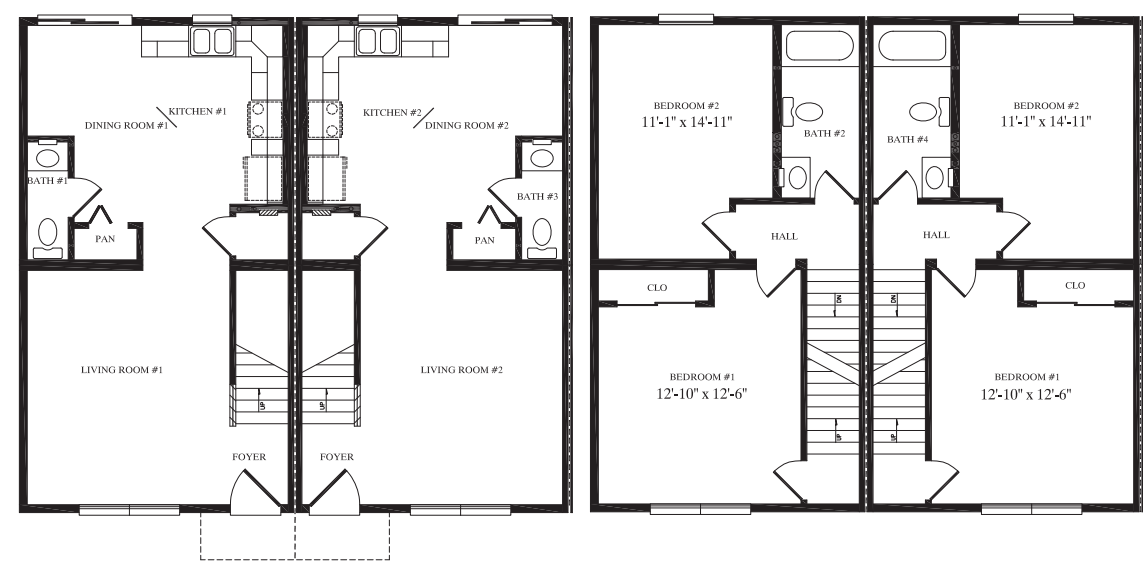


# Three-Story TOWNHOUSE



# Two-Story TOWNHOUSE

**Bloomfield**  
24' x 34'  
Two-Story Duplex  
810 sq. ft. per unit  
1,620 sq. ft. total



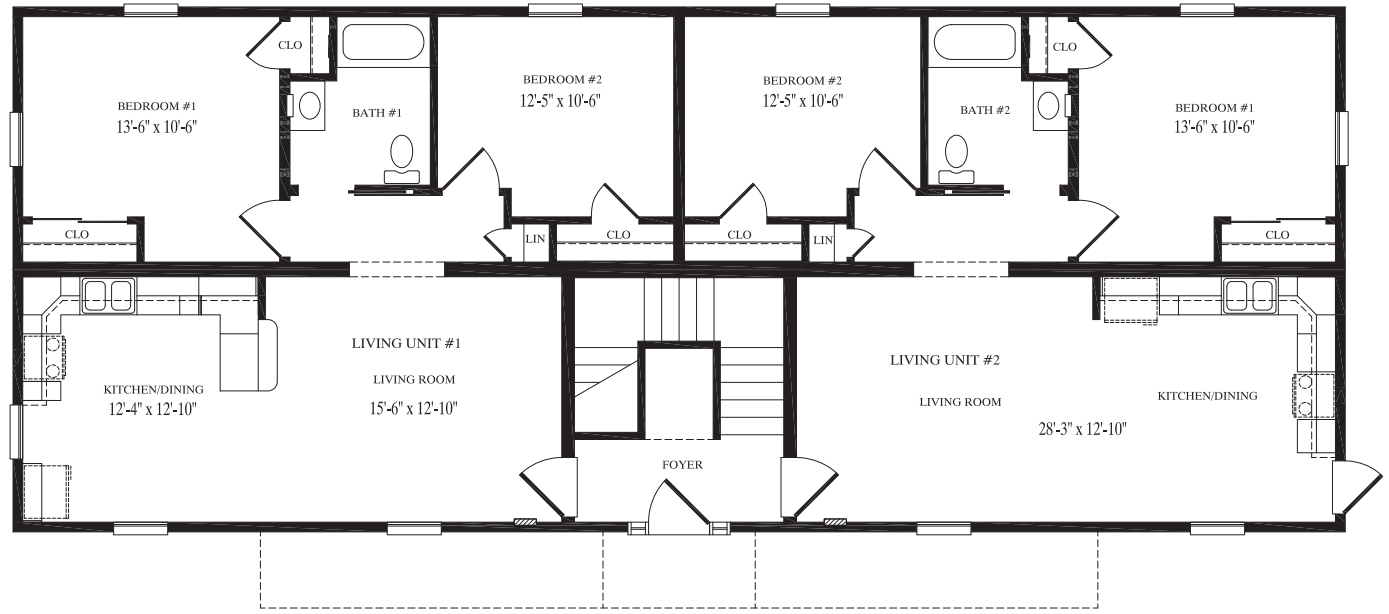
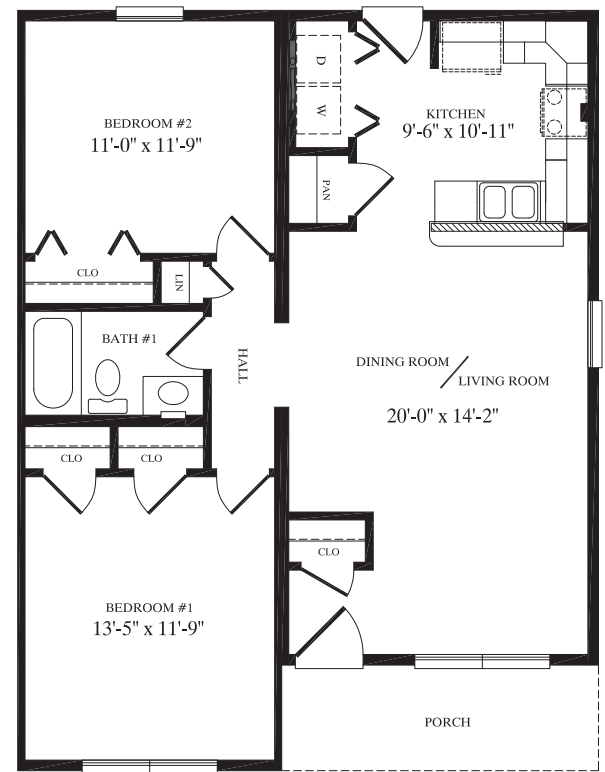
**Colebrook**  
18' x 32'  
Two-Story Townhouse  
1,102 sq. ft. per unit  
4,410 sq. ft. total





*Ranch* **DUPLICATE**

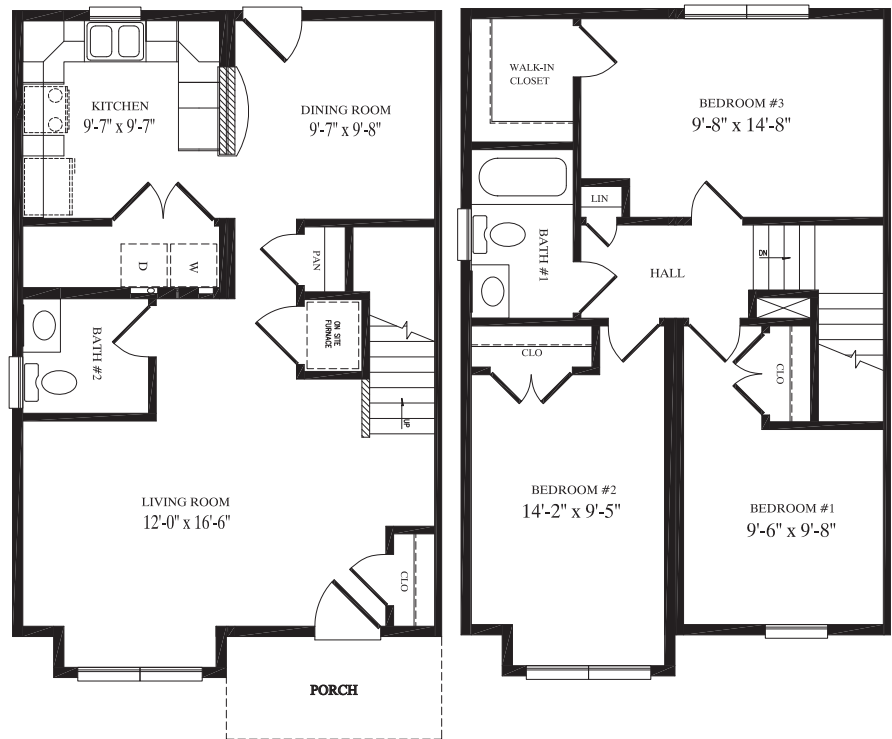
**Annandale**  
 27'5" x 36'  
 Ranch Duplex  
 915 sq. ft. per unit  
 1,830 sq. ft. total



*Two-Story* **QUADRAPLEX**

**Belmont**  
 28' x 70'  
 Two-Story Quadraplex  
 825 sq. ft. per unit  
 3,300 sq. ft. total

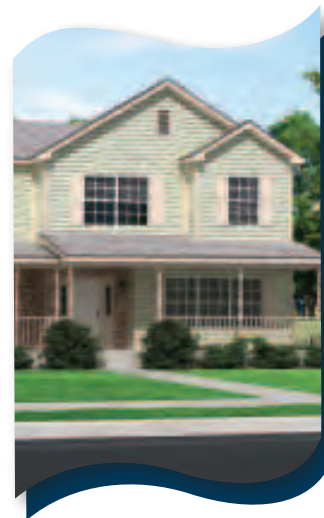
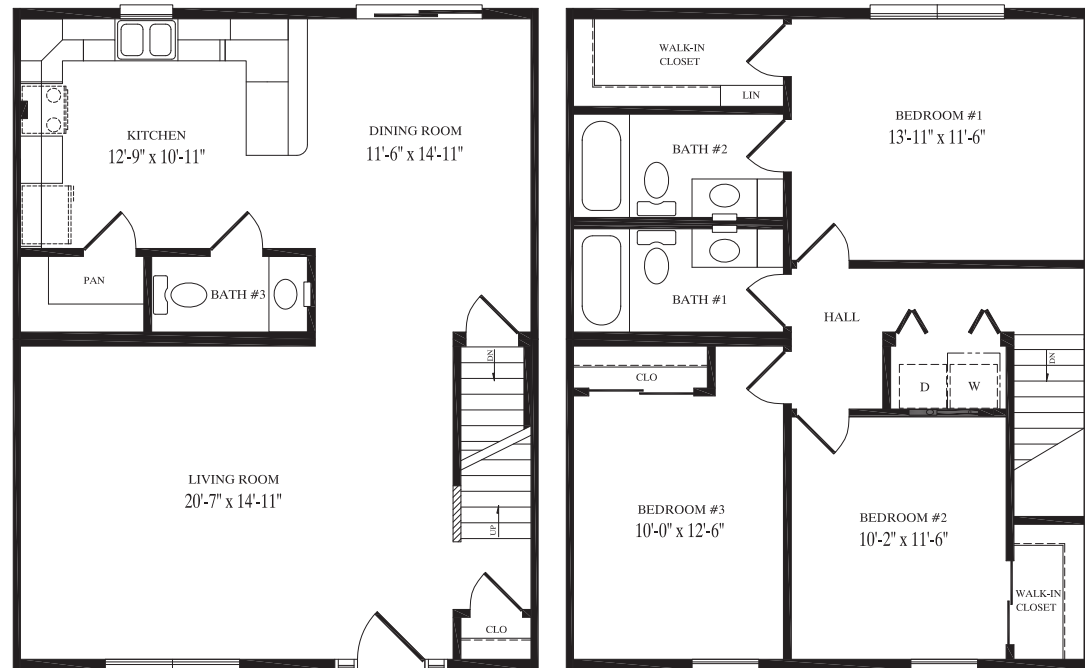
**Bridgeport**  
 33' x 42'  
 Two-Story Duplex  
 1,308 sq. ft. per unit  
 2,616 sq. ft. total



*Two-Story* **DUPLICATE**



Two-Story **TOWNHOUSE**

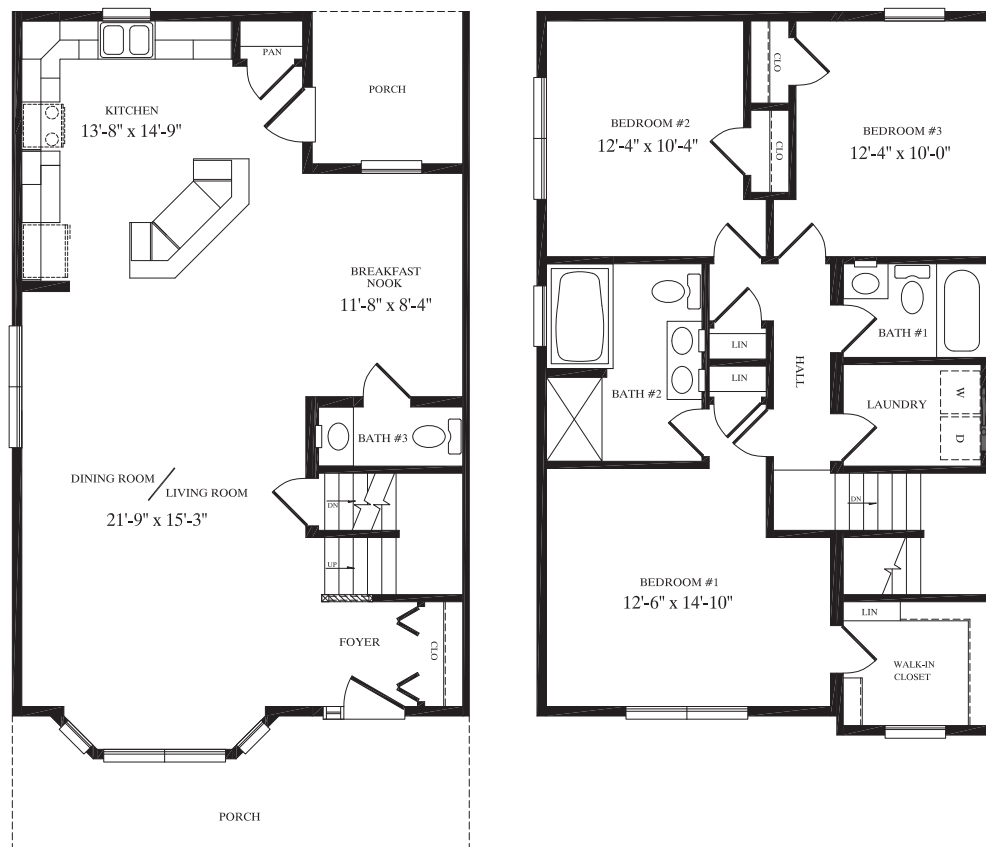


**Roslindale**  
24' x 39'  
Two-Story Townhouse  
1,827 sq. ft.



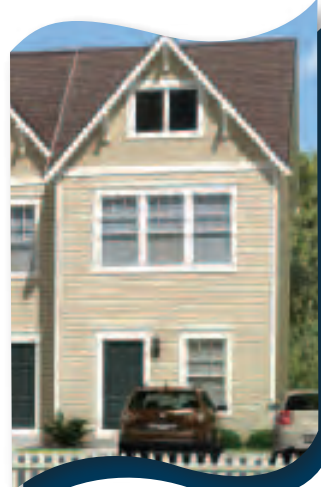
Two-Story **TOWNHOUSE**

Two-Story **TOWNHOUSE**

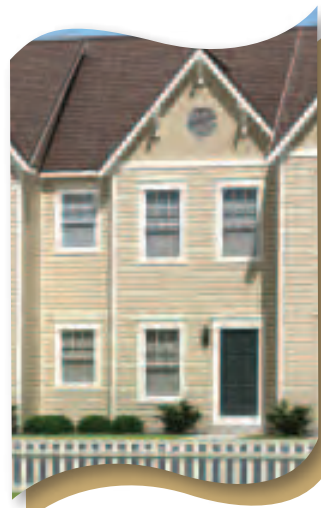
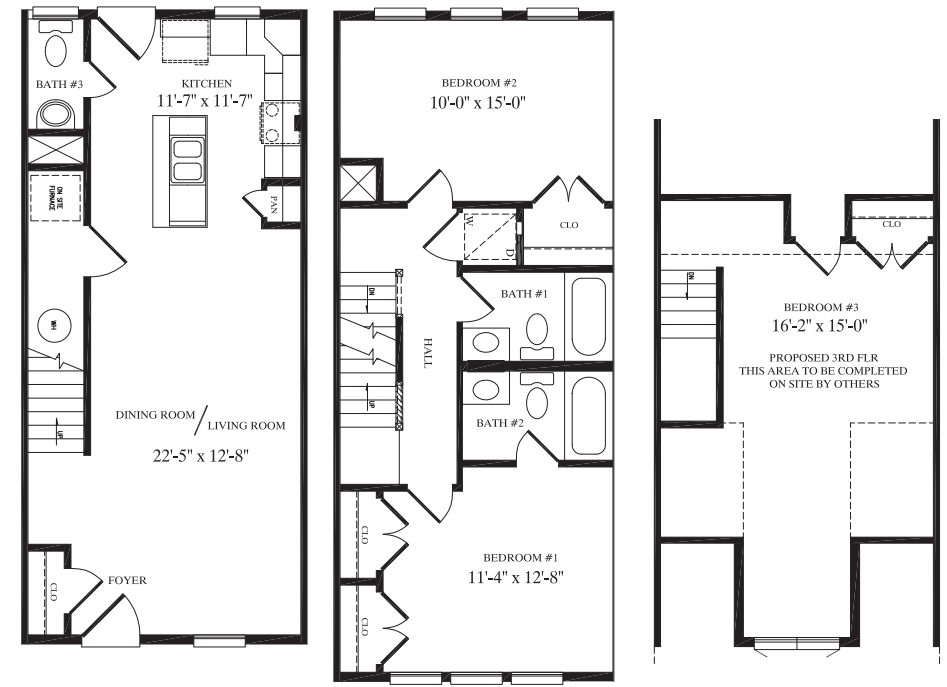




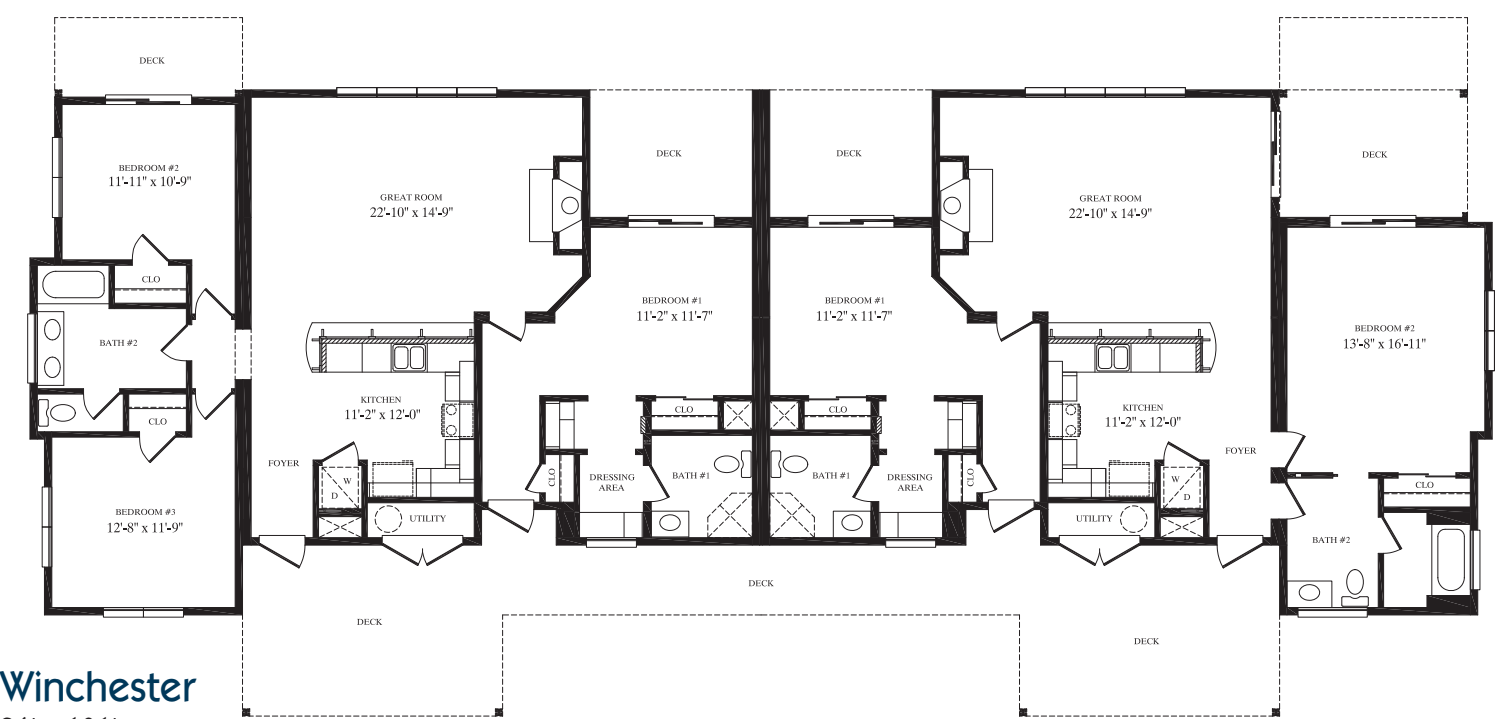
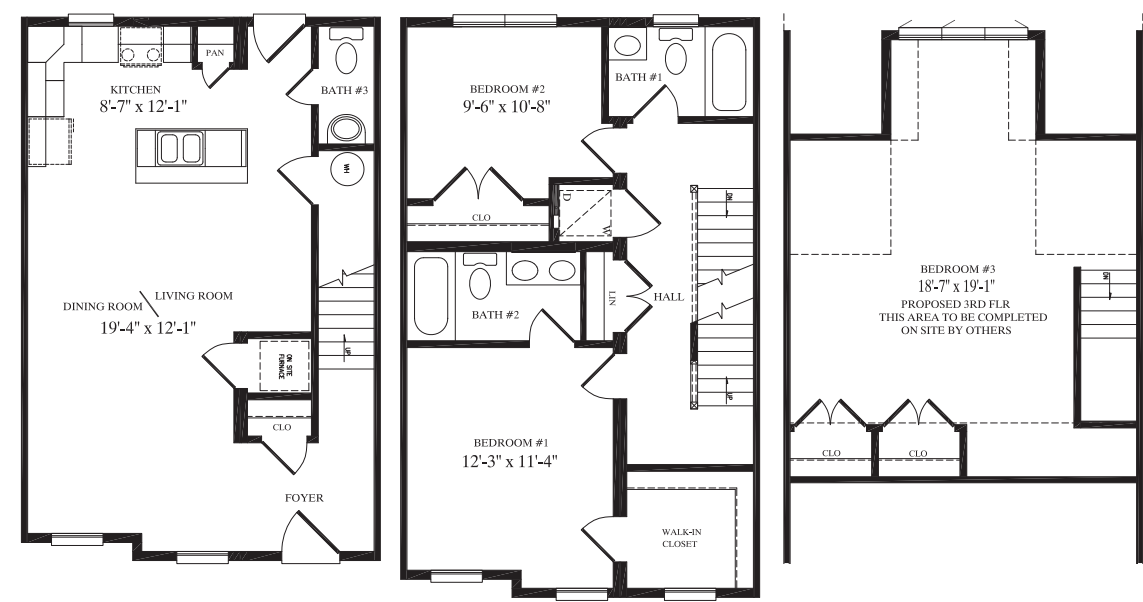
# Three-Story TOWNHOUSE



**Crisfield**  
16' x 35'  
Three-Story Townhouse  
1,120 sq. ft.



**Crownsville**  
20' x 30'  
Three-Story Townhouse  
1,218 sq. ft.



**Winchester**  
36' x 101'  
Two-Story Condominium  
1,402 sq. ft. right living units  
1,507 sq. ft. left living units  
2,909 sq. ft. per floor  
5,818 sq. ft. total

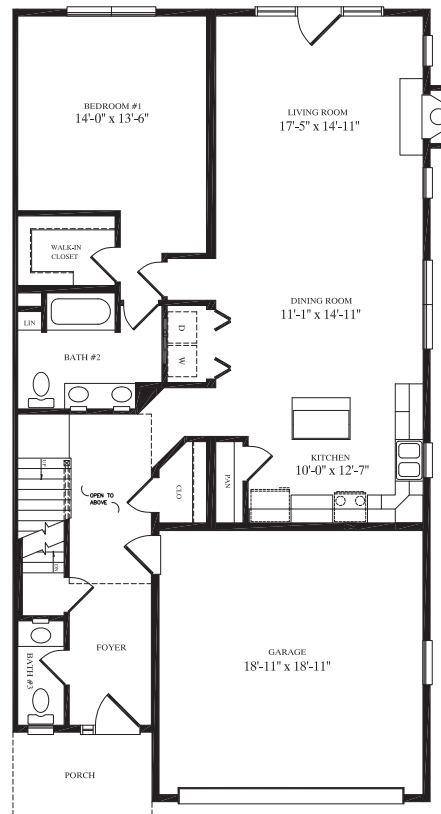
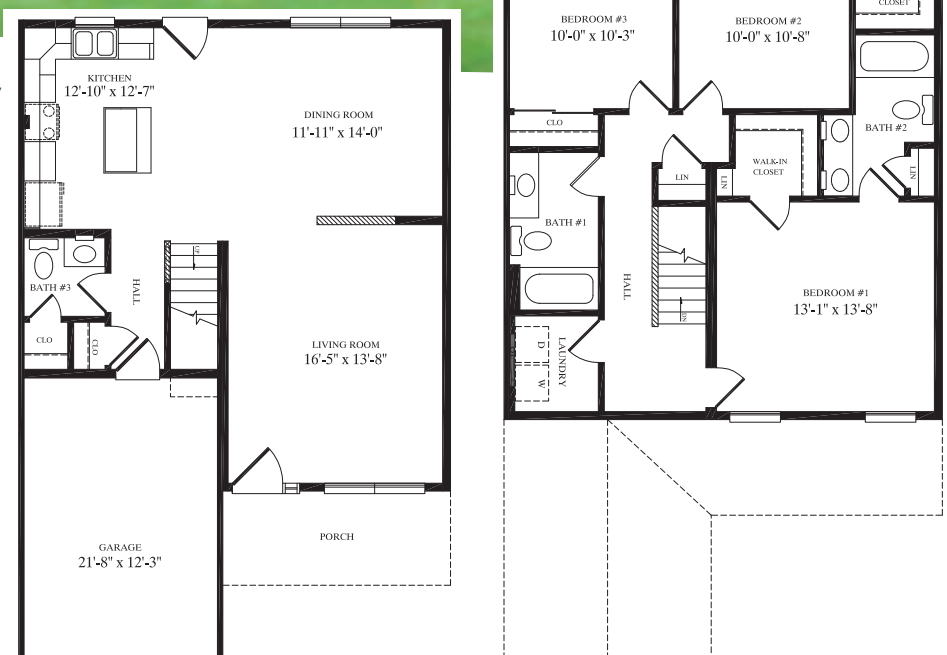
# Two-Story CONDOMINIUM



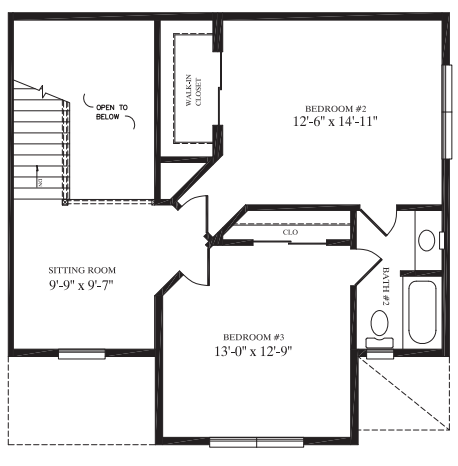


Two-Story **TOWNHOUSE**

**Bridgewater**  
27'5" x 45'  
Two-Story Townhouse  
1,845 sq. ft.



**Aspen**  
30' x 57'  
Two-Story Duplex  
2,444 sq. ft.

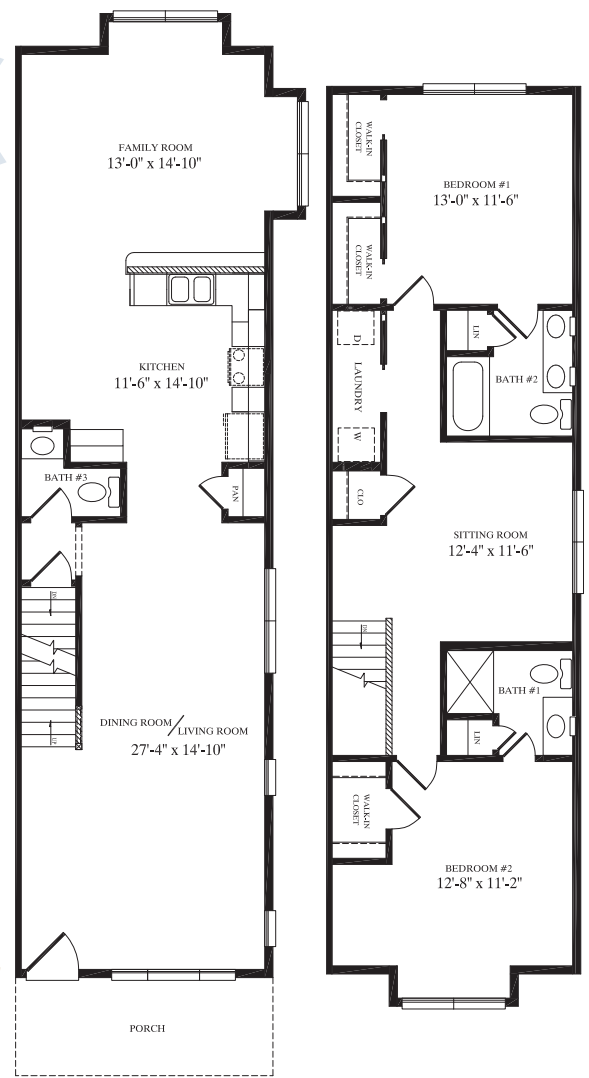


Two-Story **DUPLEX**



Three-Story **DUPLEX**

**Westport**  
16' x 59'  
Three-Story Duplex  
1,812 sq. ft.



Two-Story **TOWNHOUSE**



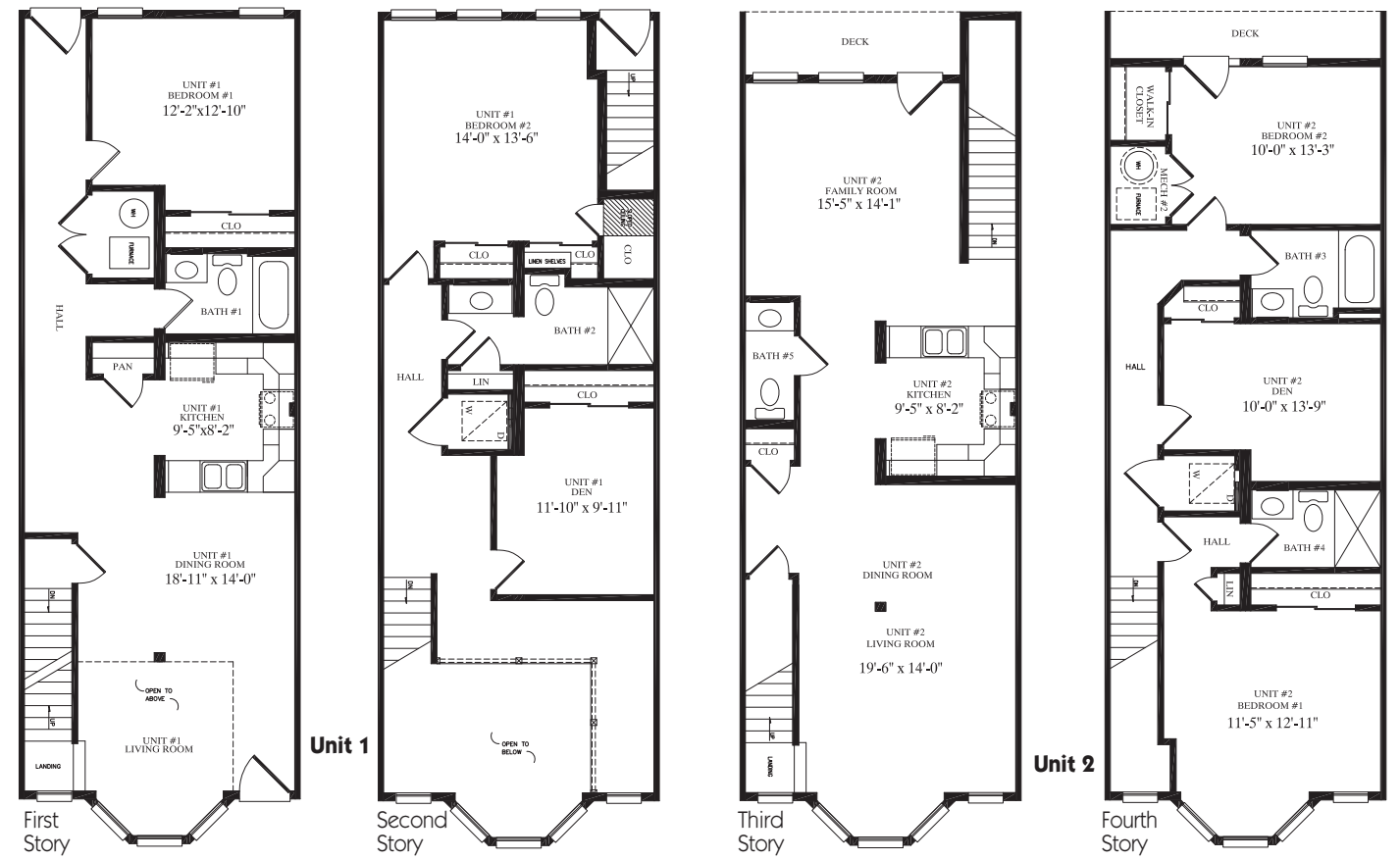
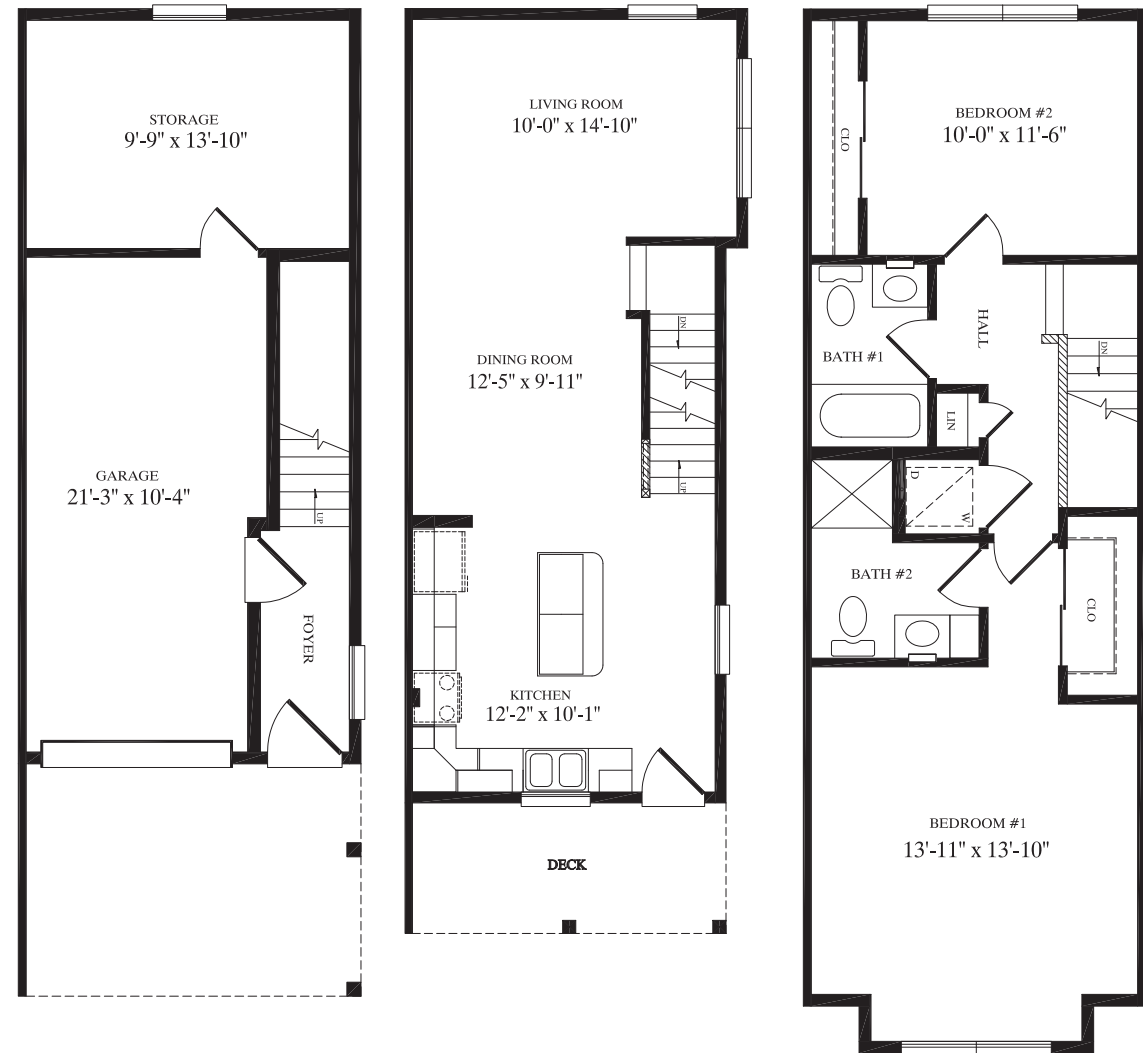
**Ridgeland**  
24'5" x 48'  
Two-Story Townhouse  
2,168 sq. ft.





Three-Story **DUPLEX**

**Mystic**  
16' x 45'  
Three-Story Duplex  
1,675 sq. ft.



**Creedmoor**  
18' x 50'  
Four-Story Duplex  
3,638 sq. ft.

Four-Story **DUPLEX**

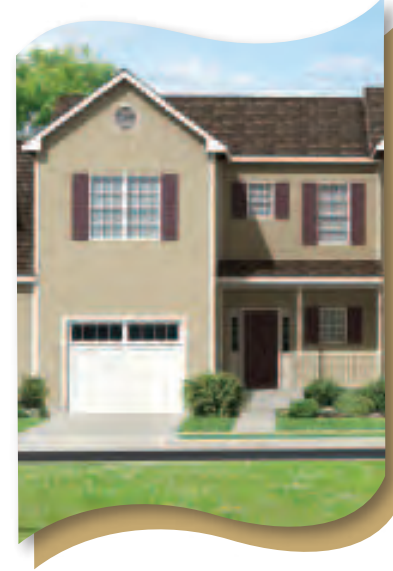
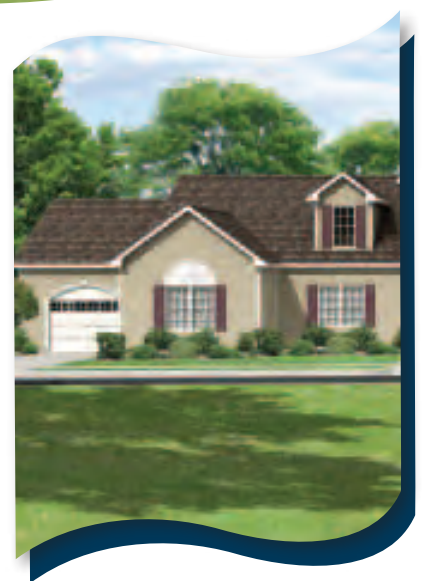




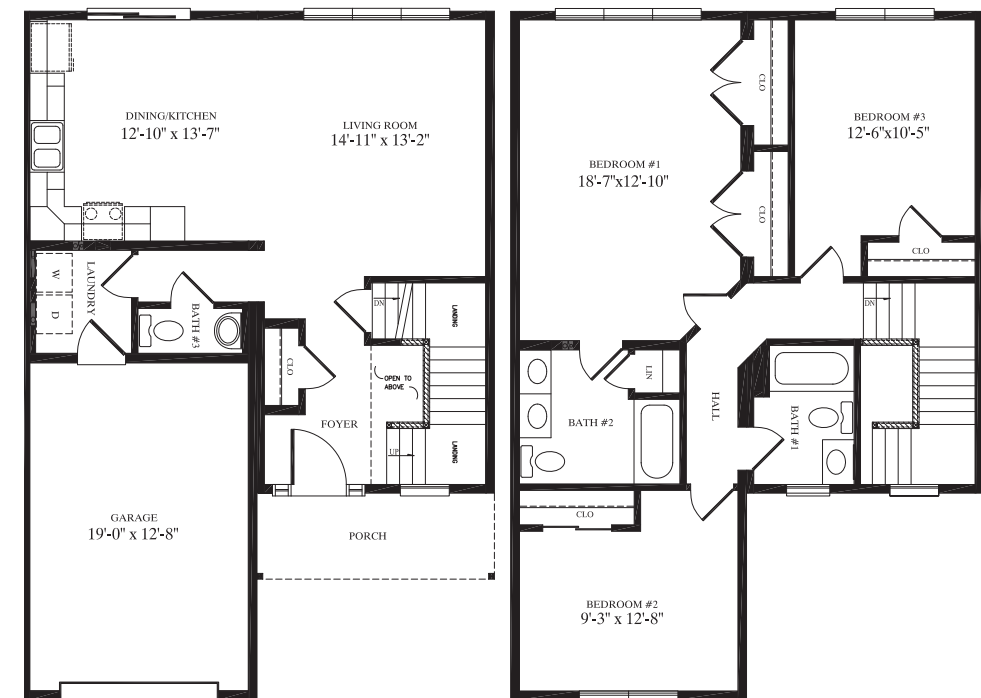
Two-Story **TOWNHOUSE**



**Canandaigua**  
48' x 48'  
Cape  
Townhouse  
1,767 sq. ft.



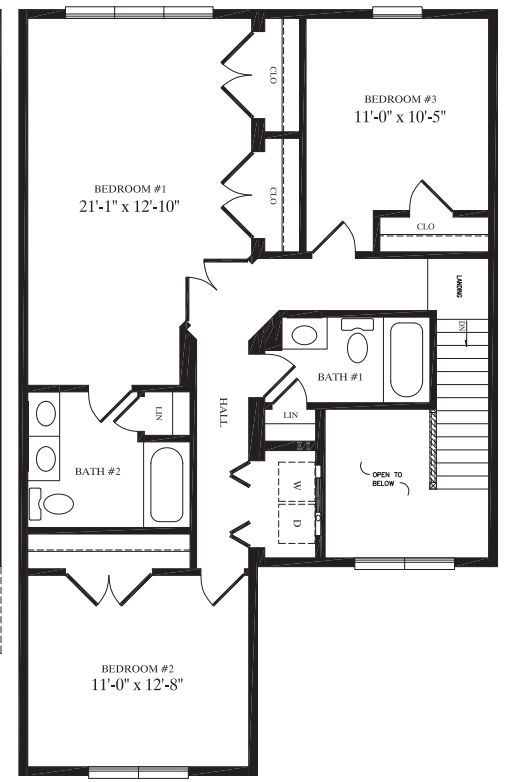
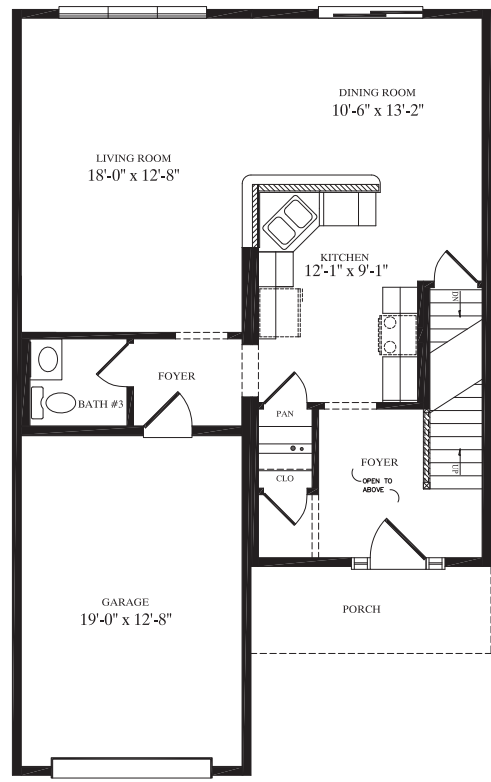
**Ontario**  
28' x 40'  
Two-Story  
Townhouse  
1,868 sq. ft.



**Cayuga**  
28' x 44'  
Two-Story  
Townhouse  
2,088 sq. ft.



Two-Story **TOWNHOUSE**

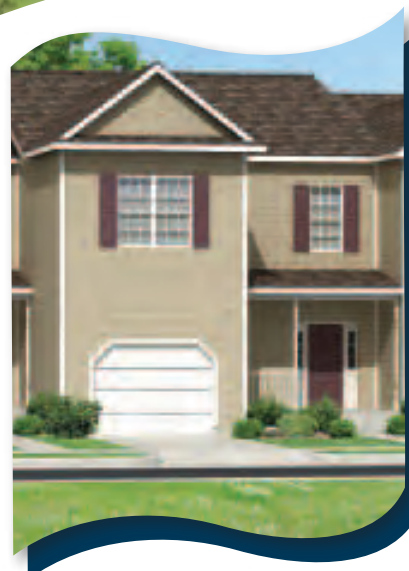


**Oneida**  
28' x 44'  
Two-Story  
Townhouse  
2,088 sq. ft.





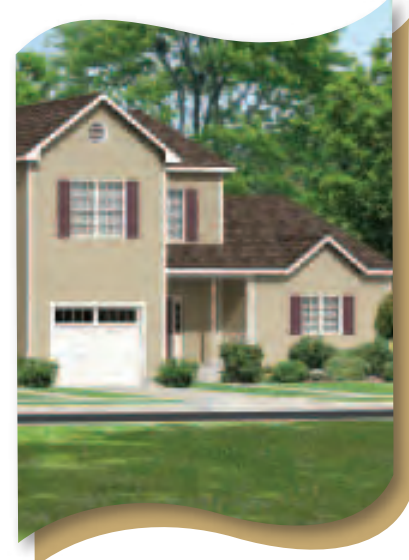
Two-Story **TOWNHOUSE**



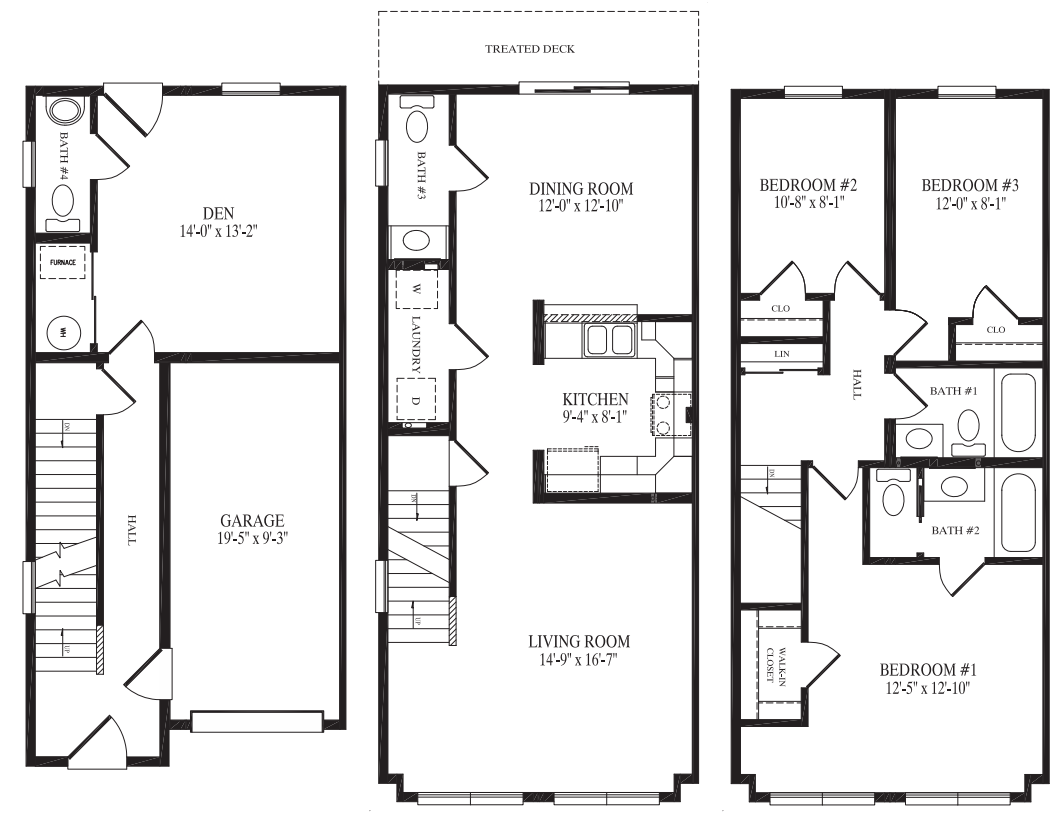
**Seneca**  
28' x 44'  
Two-Story  
Townhouse  
2,364 sq. ft.



**Keuka**  
43' x 44'  
Two-Story  
Townhouse  
2,584 sq. ft.



**Pine Meadow**  
18' x 37'  
Three-Story  
Townhouse  
1,979 sq. ft.



Three-Story **TOWNHOUSE**

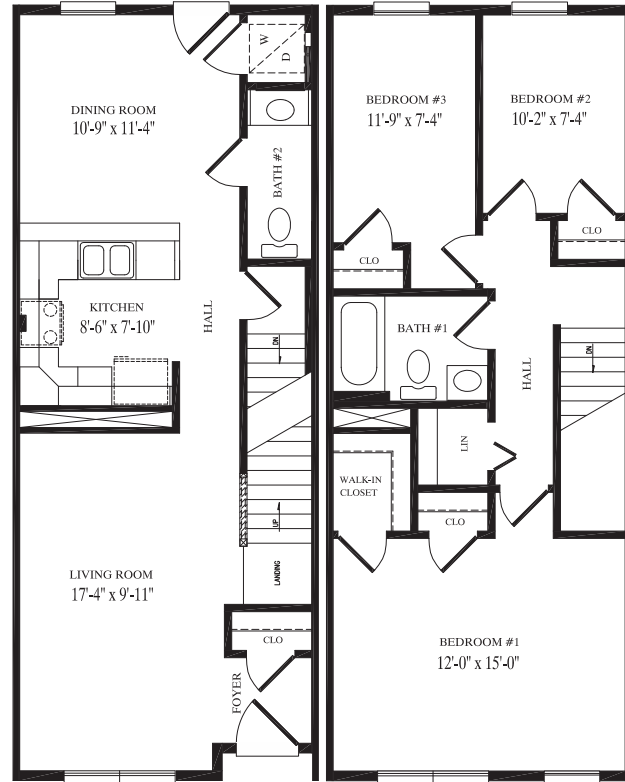


Two-Story

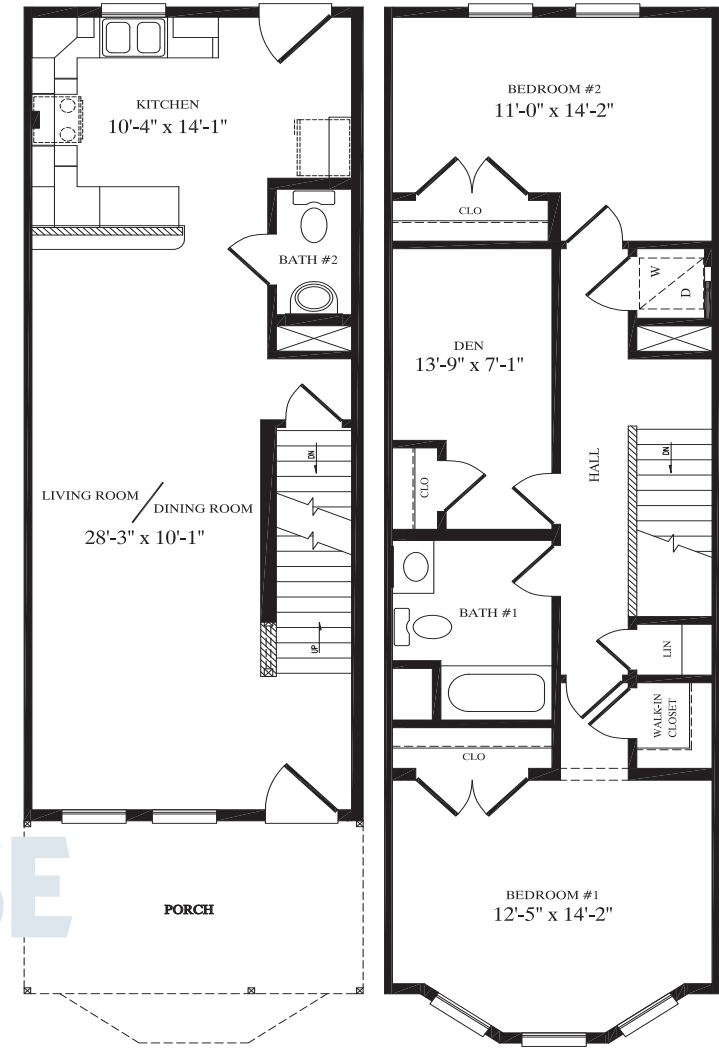
# TOWNHOUSE



**Templeton**  
16' x 40'  
Two-Story  
Townhouse  
1,253 sq. ft.



**Woodbridge**  
15' x 48'  
Two-Story  
Townhouse  
1,295 sq. ft.

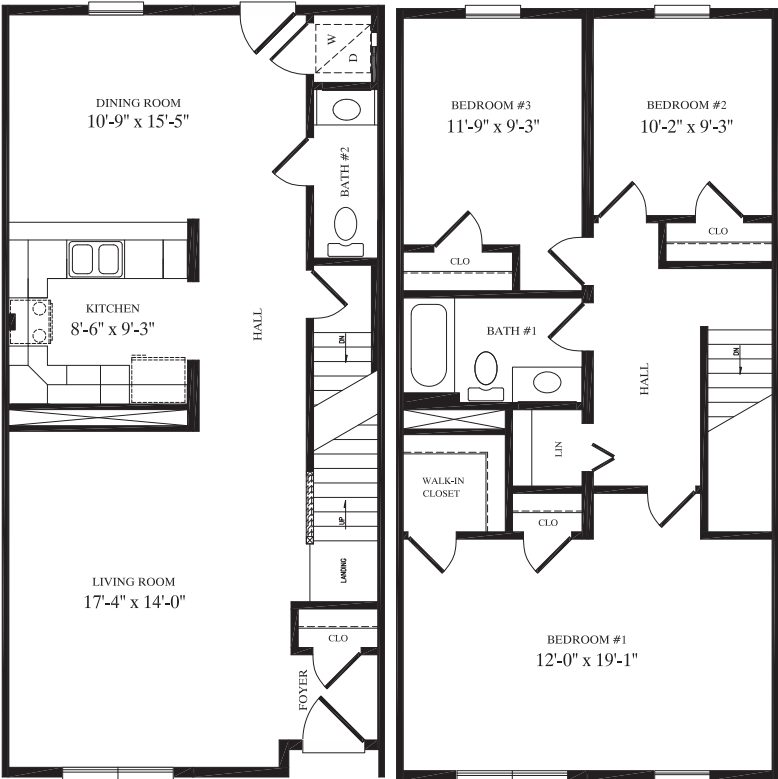


# Two-Story TOWNHOUSE



Two-Story

# TOWNHOUSE



**Brookshire**  
20' x 40'  
Two-Story  
Townhouse  
1,578 sq. ft.



Professional Building Systems, Inc.



72 East Market Street  
Middleburg, PA 17842  
Phone (570) 837-1424  
Fax (570) 837-6133  
[www.pbsmodular.com](http://www.pbsmodular.com)



*Great Homes Start With Quality Products...*



Your PBS Builder/Developer

Builders/Developers are not agents of Professional Building Systems.

NOTE: All renderings are artist's concepts only and may vary from actual home.